

SHADOW STUDIES 253 COWARD STREET MASCOT

ADDENDUM
TO
DA DESIGN REPORT / 253 COWARD STREET MASCOT
PREPARED
FOR
BAYSIDE COUNCIL
13 MARCH 2020

BATESSMART™



CLIENT

SKY LIFE



This report has been prepared for Bayside Council as an addendum to Development Application for 253 Coward Street Mascot. This report details the impact of the proposed development (253 Coward Street Mascot) on Child Care Centre located at 247 Coward Street.

In the absence of accurate survey on the extent of the Child Care Centre, the location and position of the Child Care are approximate only. The shadow studies detailed herein are based on information ascertained from Google Earth and Nearmaps.

PROJECT NUMBER

S12325

BATESSMART™

ARCHITECTURE
INTERIOR DESIGN
URBAN DESIGN
STRATEGY

SYDNEY

43 Brisbane Street
Surry Hills New South Wales
2010 Australia
T +61 2 8354 5100
F +61 2 8354 5199

MELBOURNE

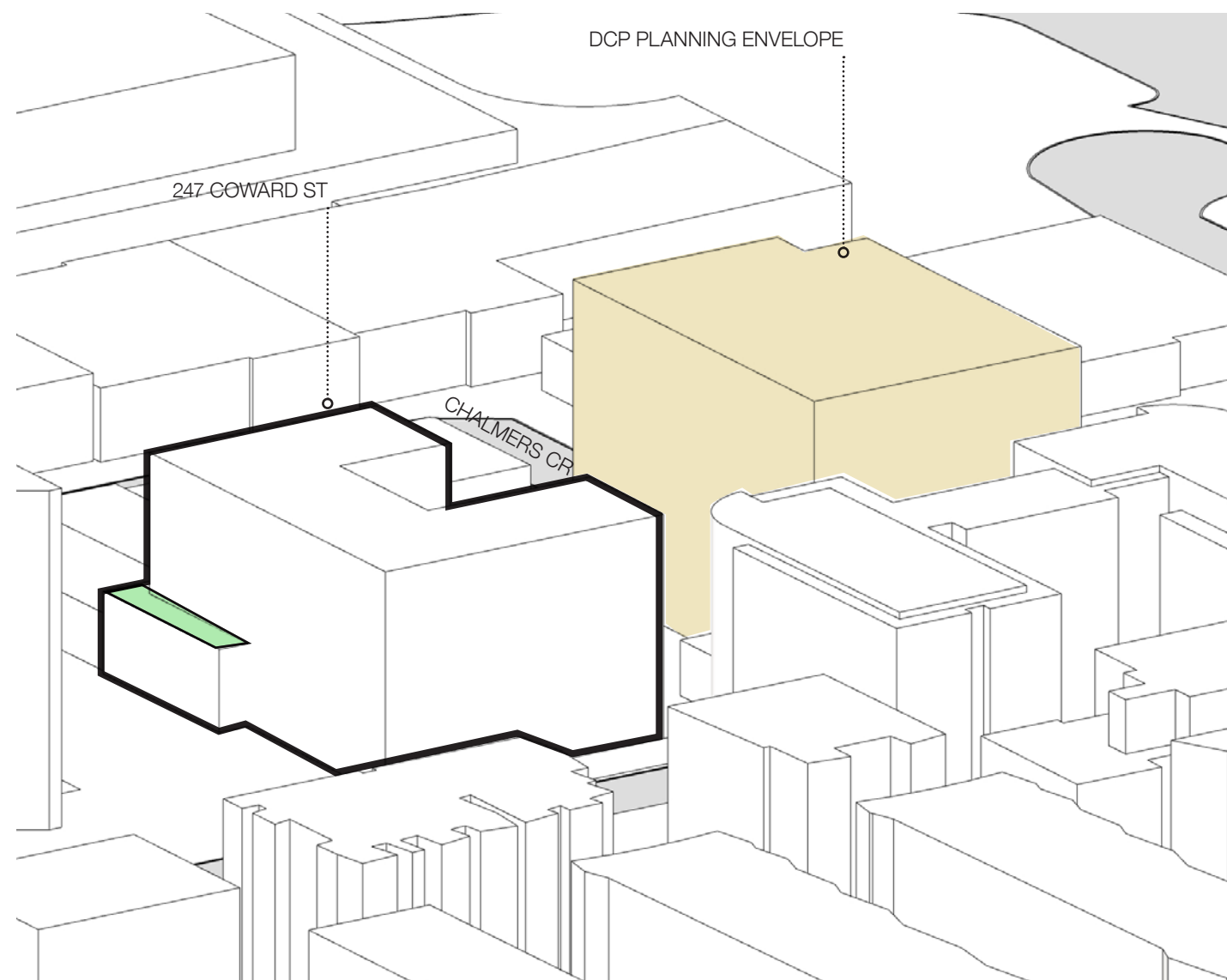
1 Nicholson Street
Melbourne Victoria
3000 Australia
T +61 3 8664 6200
F +61 3 8664 6300

WWW.BATESSMART.COM

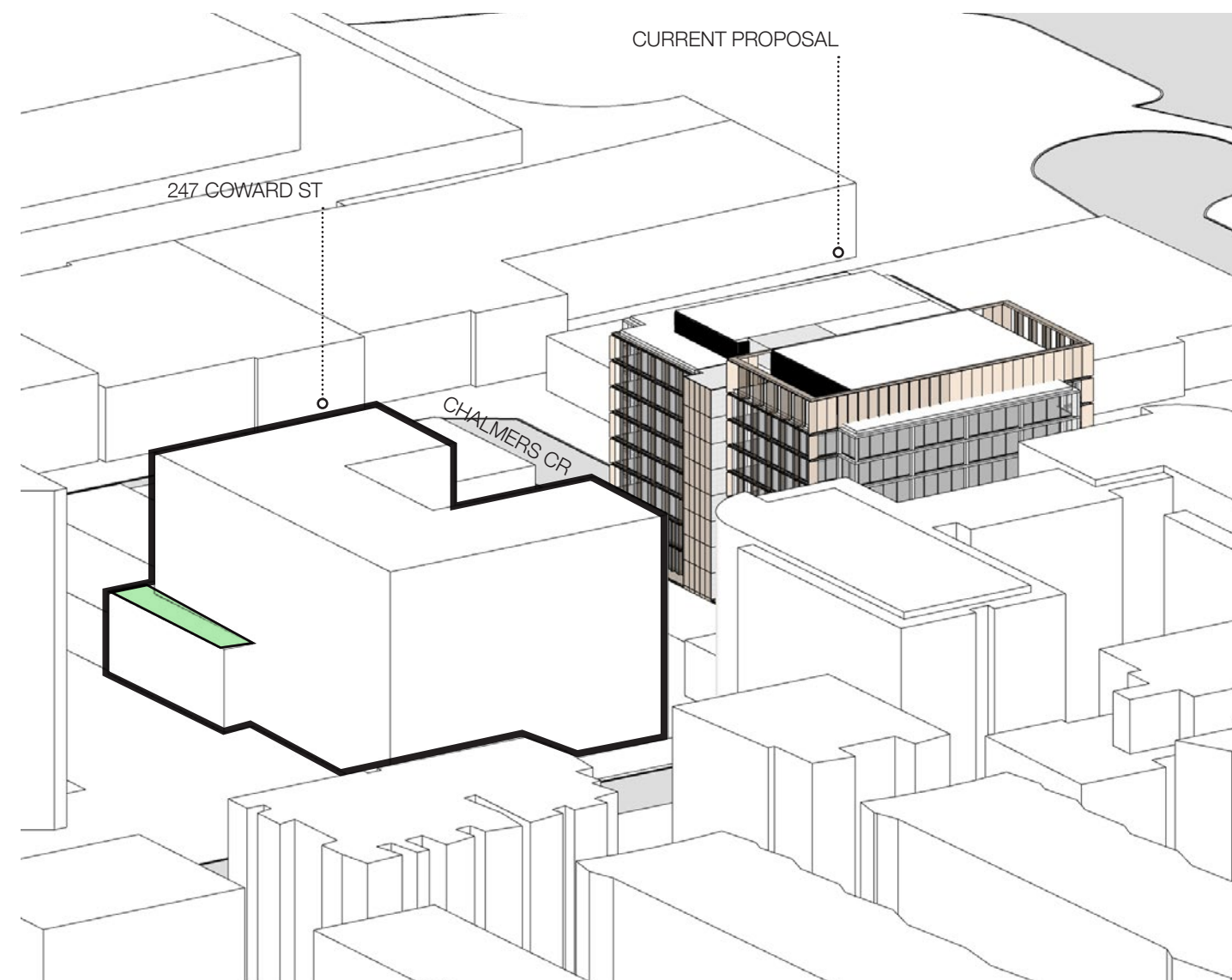
ABN 68 094 740 986

SHADOWS STUDIES

VIEWS FROM THE SUN



21 JUNE 9AM / DCP PLANNING ENVELOPE



21 JUNE 9AM / CURRENT PROPOSAL

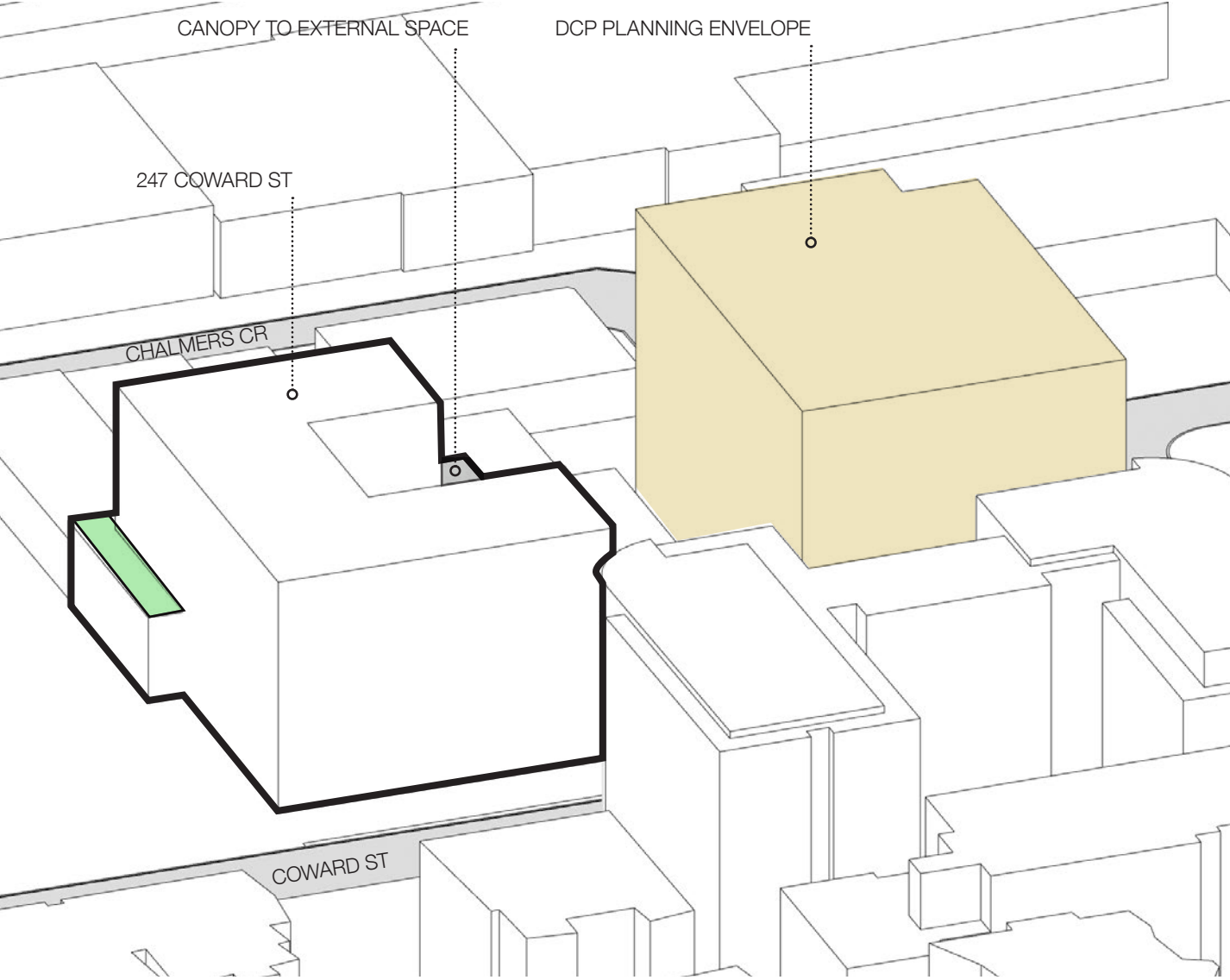
CHILD CARE TERRACE

NOTE

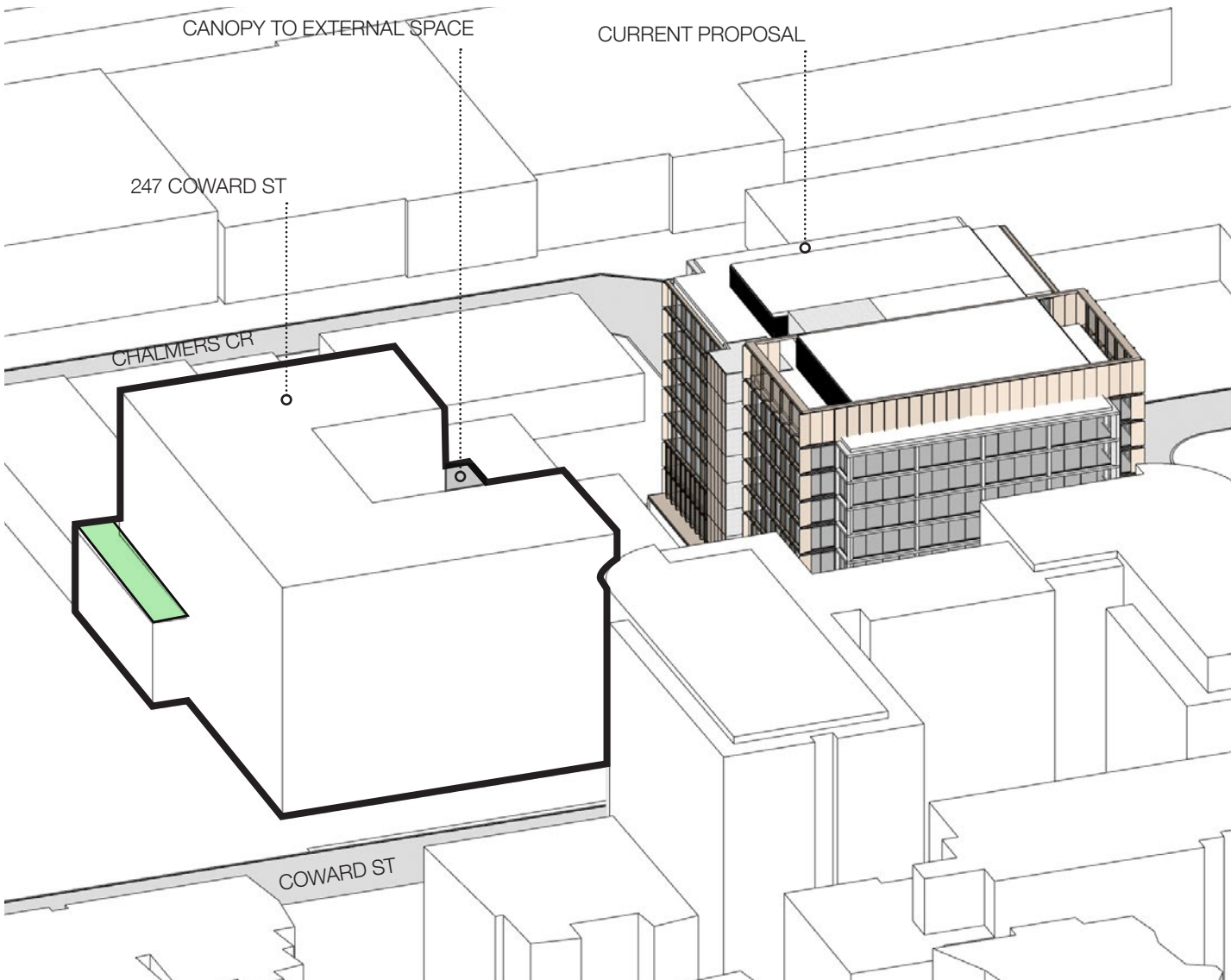
In the absence of accurate survey on the extent of the Child Care Centre, the location and position of the Child Care are approximate only. The shadow studies detailed herein are based on information ascertained from Google Earth and Nearmaps.

SHADOWS STUDIES

VIEWS FROM THE SUN



21 JUNE 10AM / DCP PLANNING ENVELOPE



21 JUNE 10AM / CURRENT PROPOSAL

CHILD CARE TERRACE

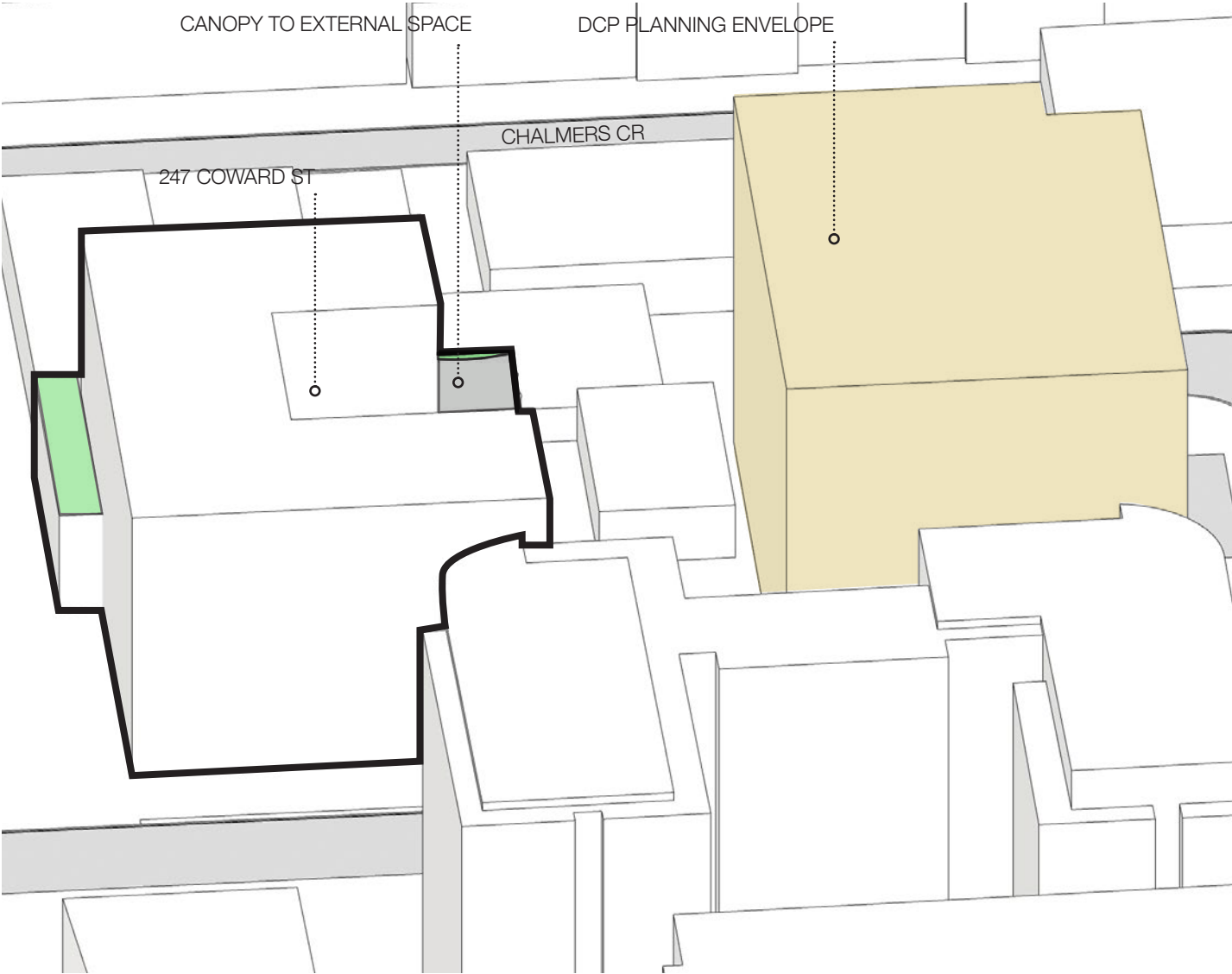
NOTE
In the absence of accurate survey on the extent of the Child Care Centre, the location and position of the Child Care are approximate only. The shadow studies detailed herein are based on information ascertained from Google Earth and Nearmaps.

SHADOWS STUDIES

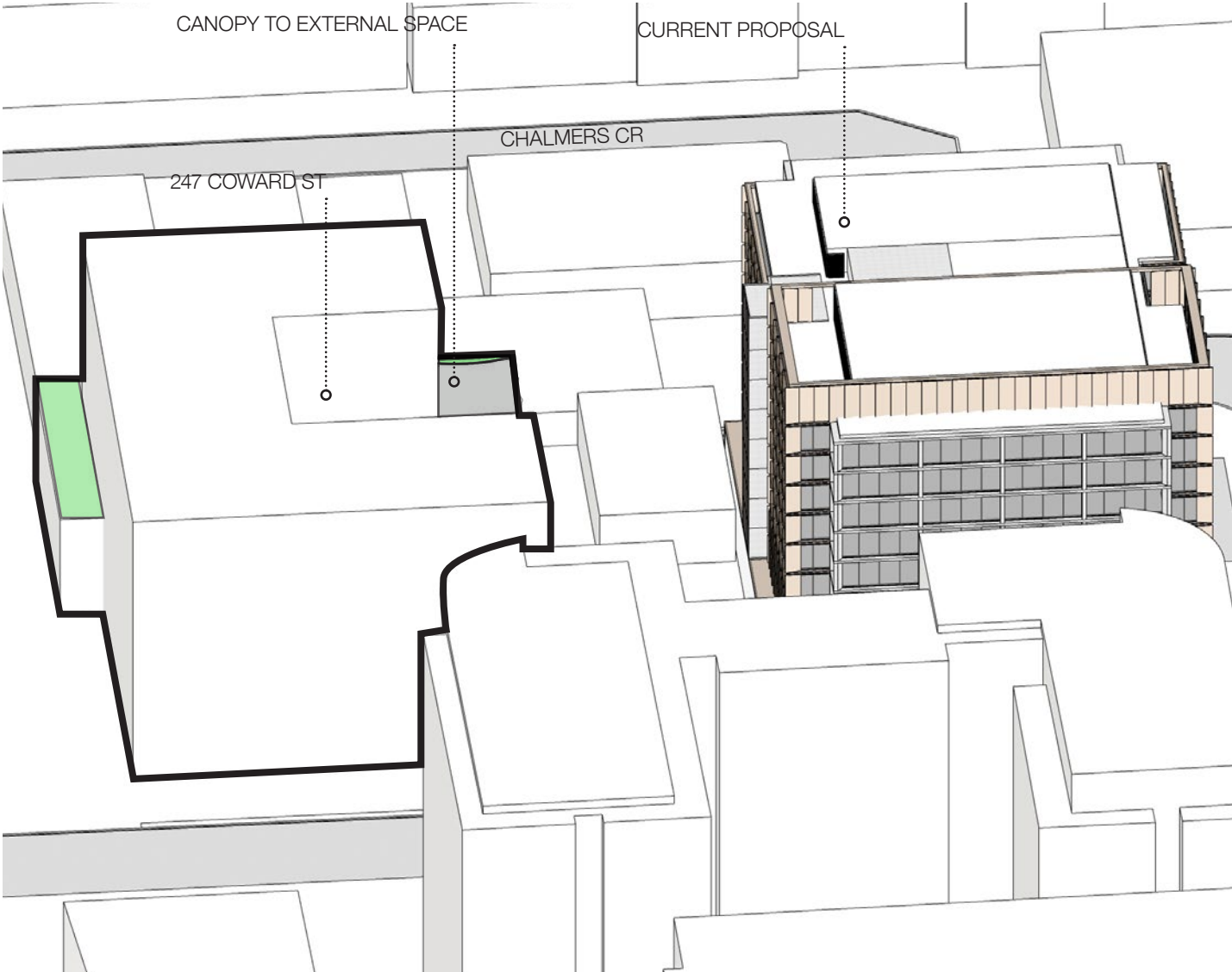
VIEWS FROM THE SUN

CHILD CARE TERRACE

NOTE
In the absence of accurate survey on the extent of the Child Care Centre, the location and position of the Child Care are approximate only. The shadow studies detailed herein are based on information ascertained from Google Earth and Nearmaps.



21 JUNE 11AM / DCP PLANNING ENVELOPE



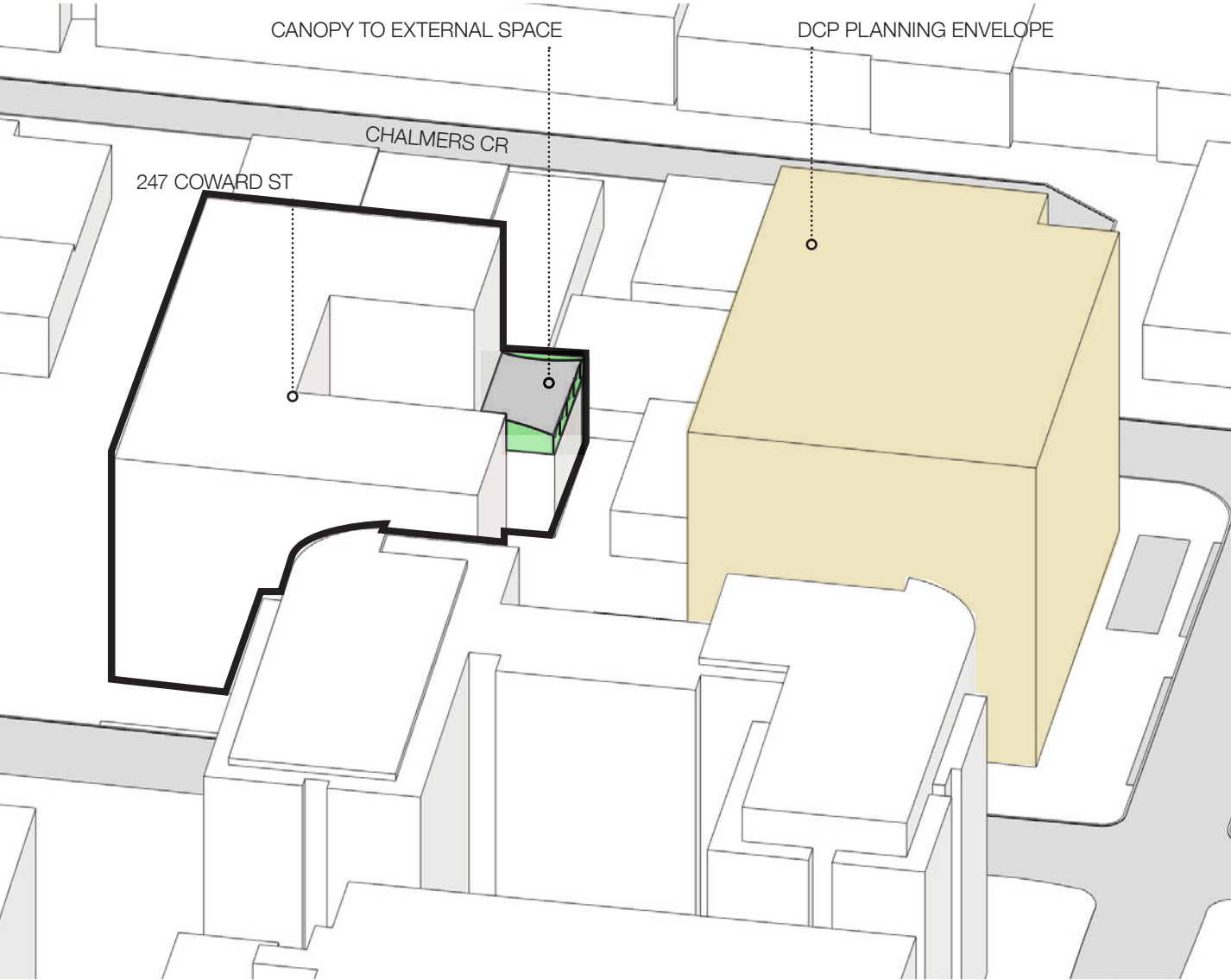
21 JUNE 11AM / CURRENT PROPOSAL

SHADOWS STUDIES

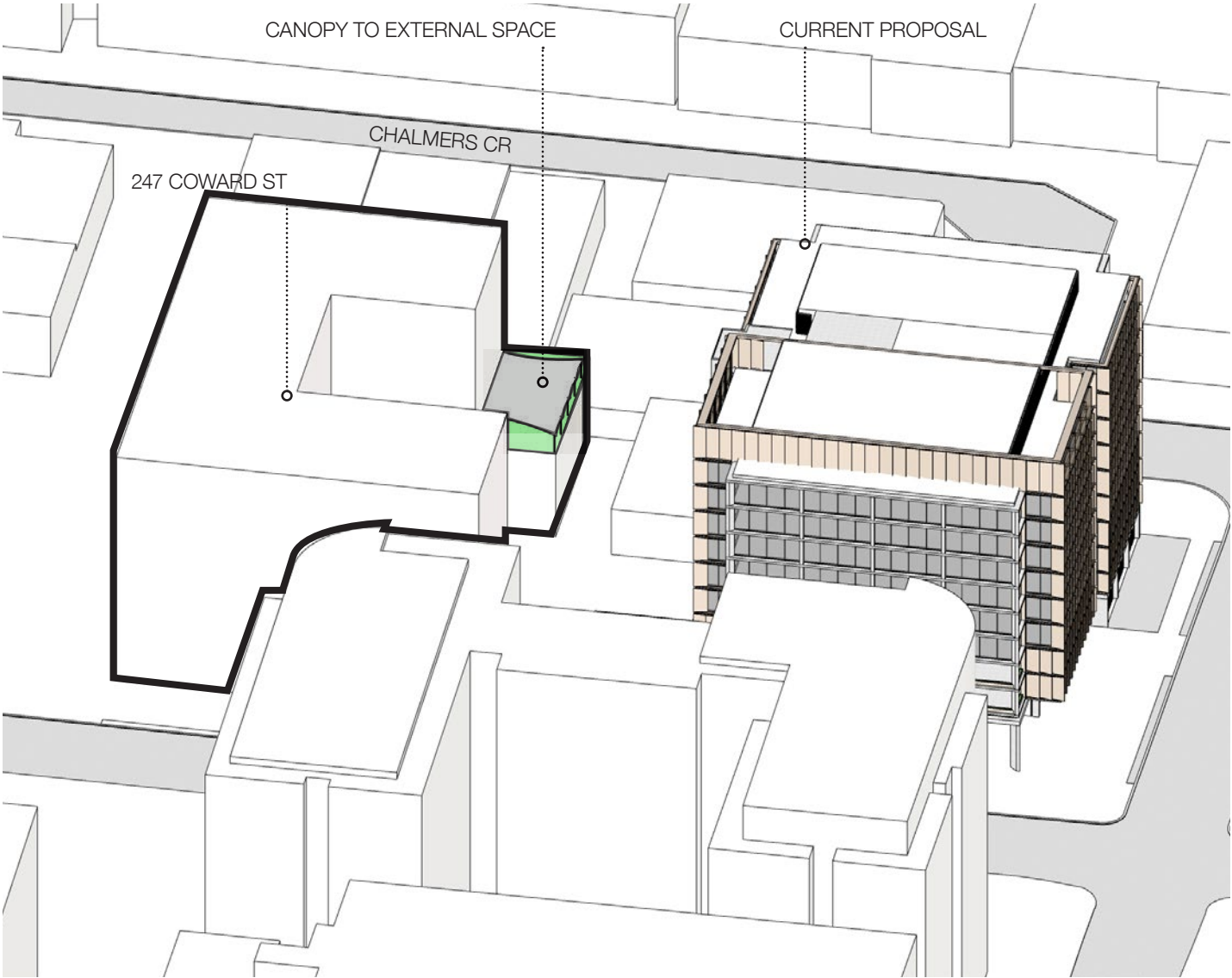
VIEWS FROM THE SUN

CHILD CARE TERRACE

NOTE
In the absence of accurate survey on the extent of the Child Care Centre, the location and position of the Child Care are approximate only. The shadow studies detailed herein are based on information ascertained from Google Earth and Nearmaps.



21 JUNE 12PM / DCP PLANNING ENVELOPE



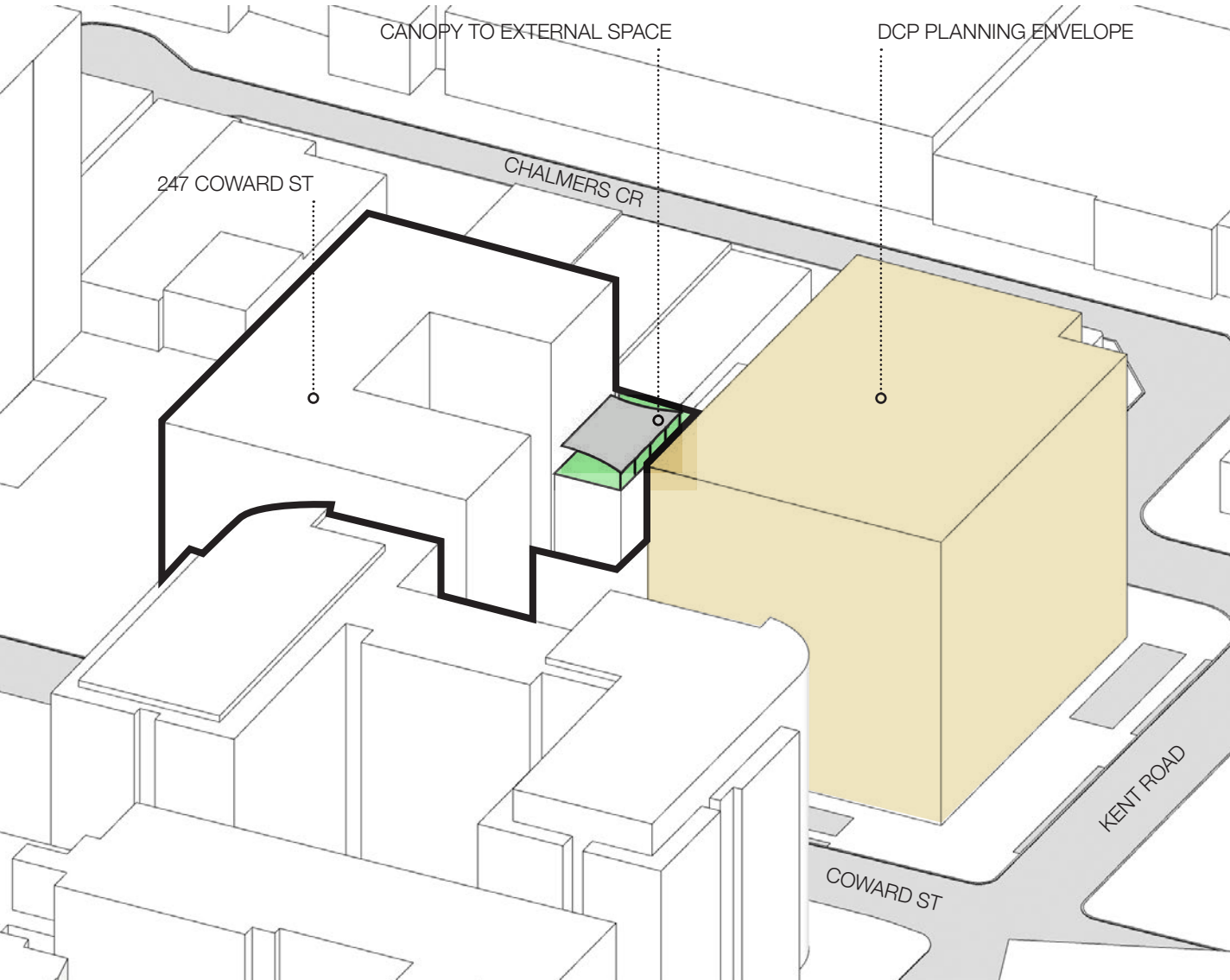
21 JUNE 12PM / CURRENT PROPOSAL

SHADOWS STUDIES

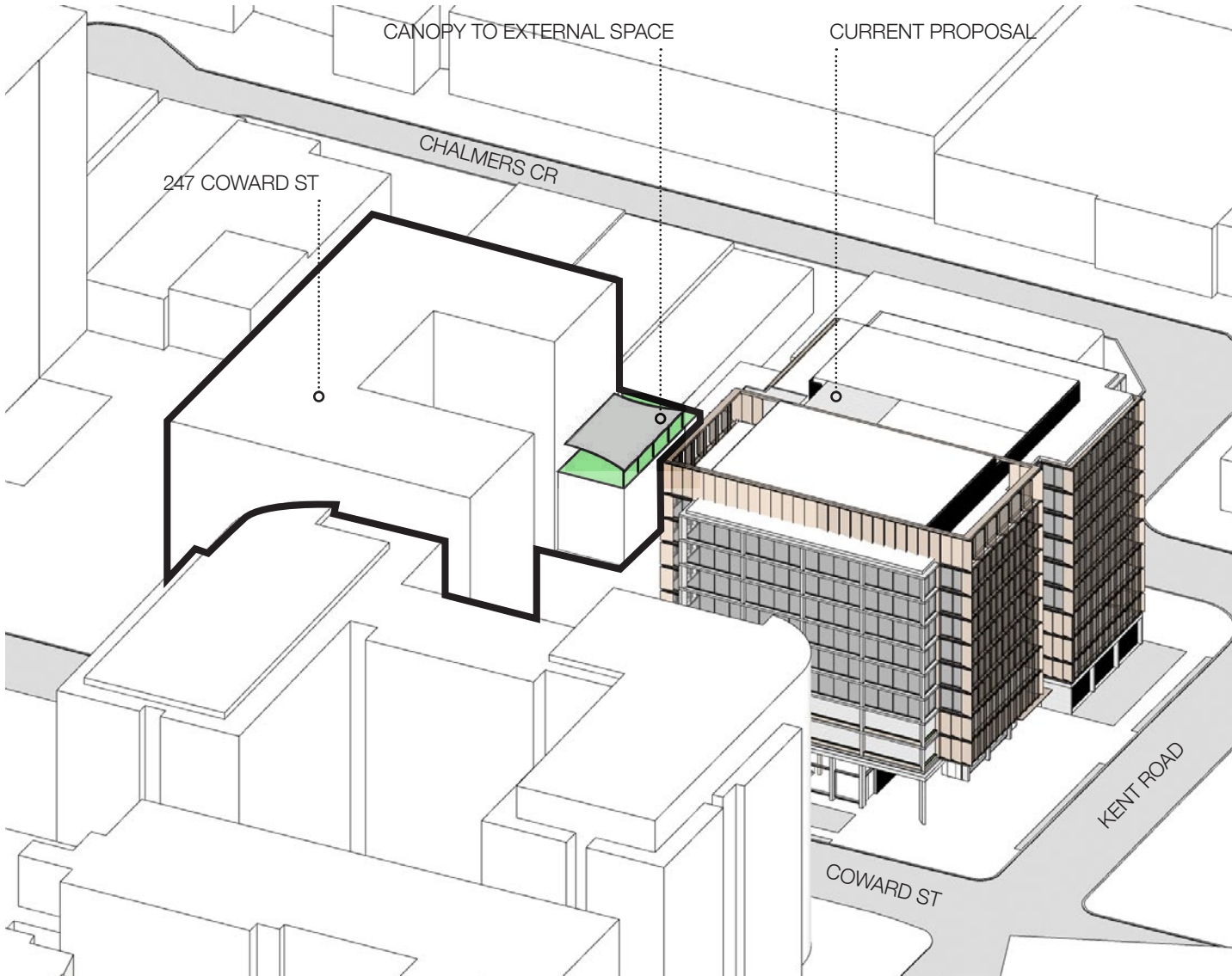
VIEWS FROM THE SUN

CHILD CARE TERRACE

NOTE
In the absence of accurate survey on the extent of the Child Care Centre, the location and position of the Child Care are approximate only. The shadow studies detailed herein are based on information ascertained from Google Earth and Nearmaps.



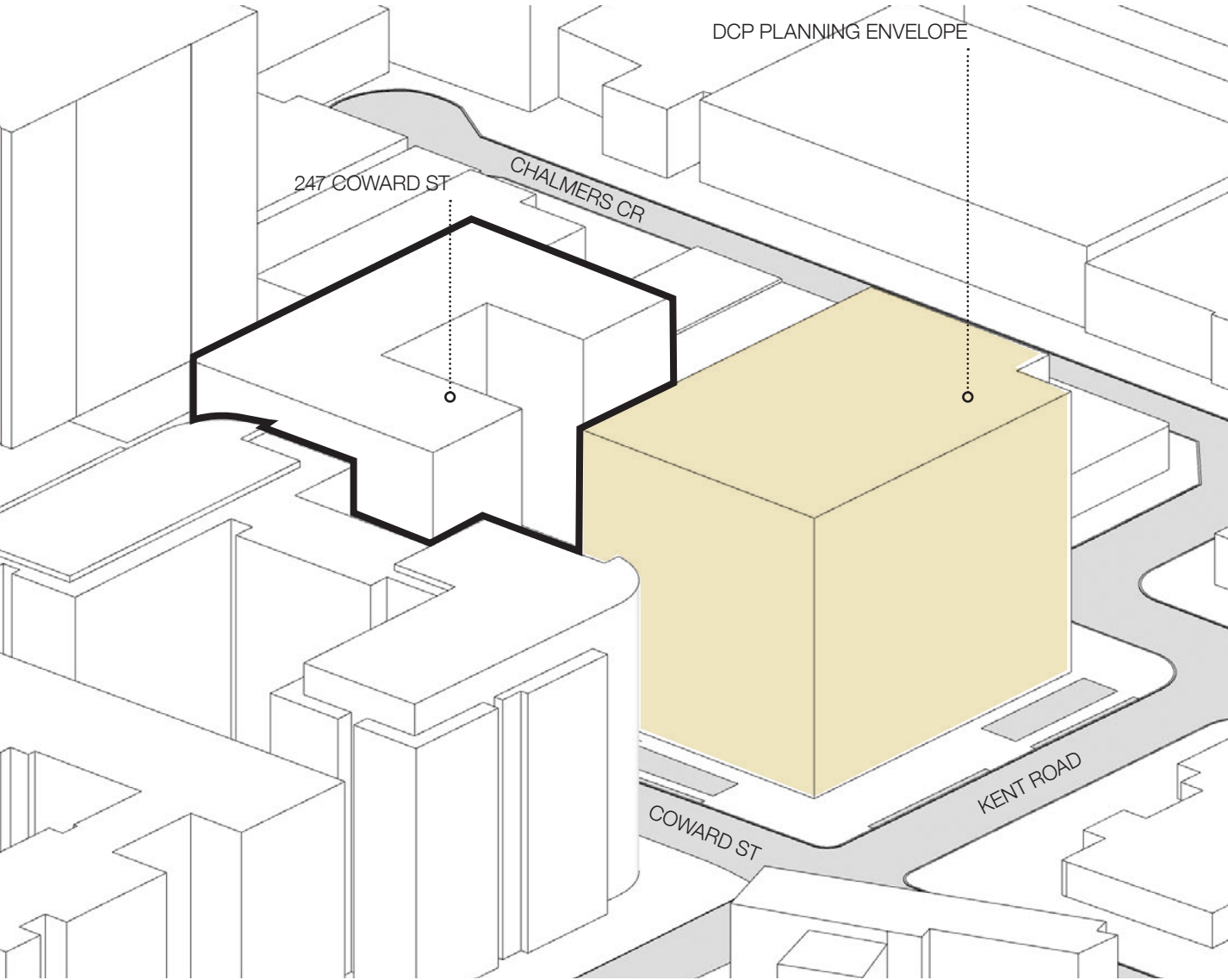
21 JUNE 1PM / DCP PLANNING ENVELOPE



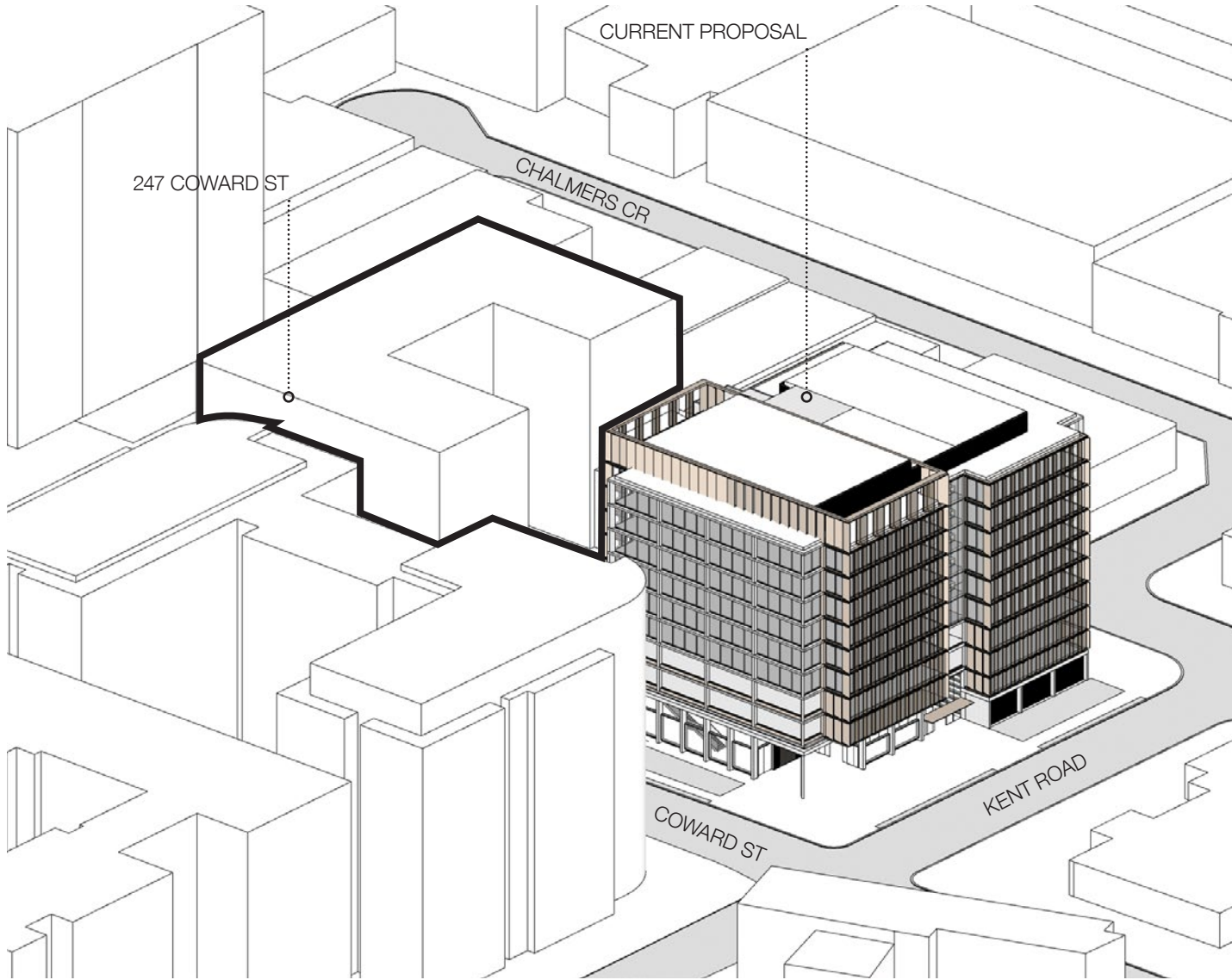
21 JUNE 1PM / CURRENT PROPOSAL

SHADOWS STUDIES

VIEWS FROM THE SUN



21 JUNE 2PM / DCP PLANNING ENVELOPE



21 JUNE 2PM / CURRENT PROPOSAL

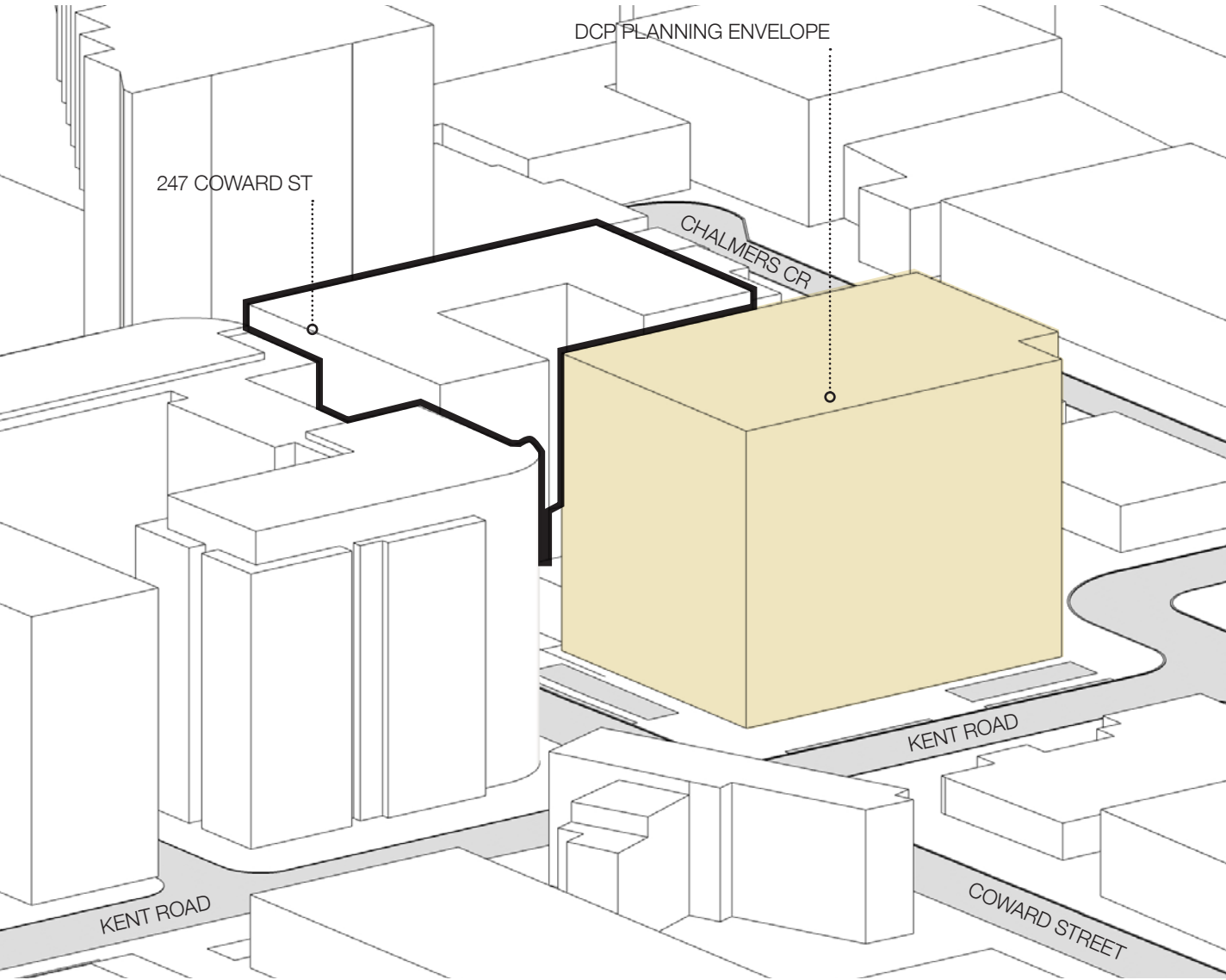
CHILD CARE TERRACE

NOTE

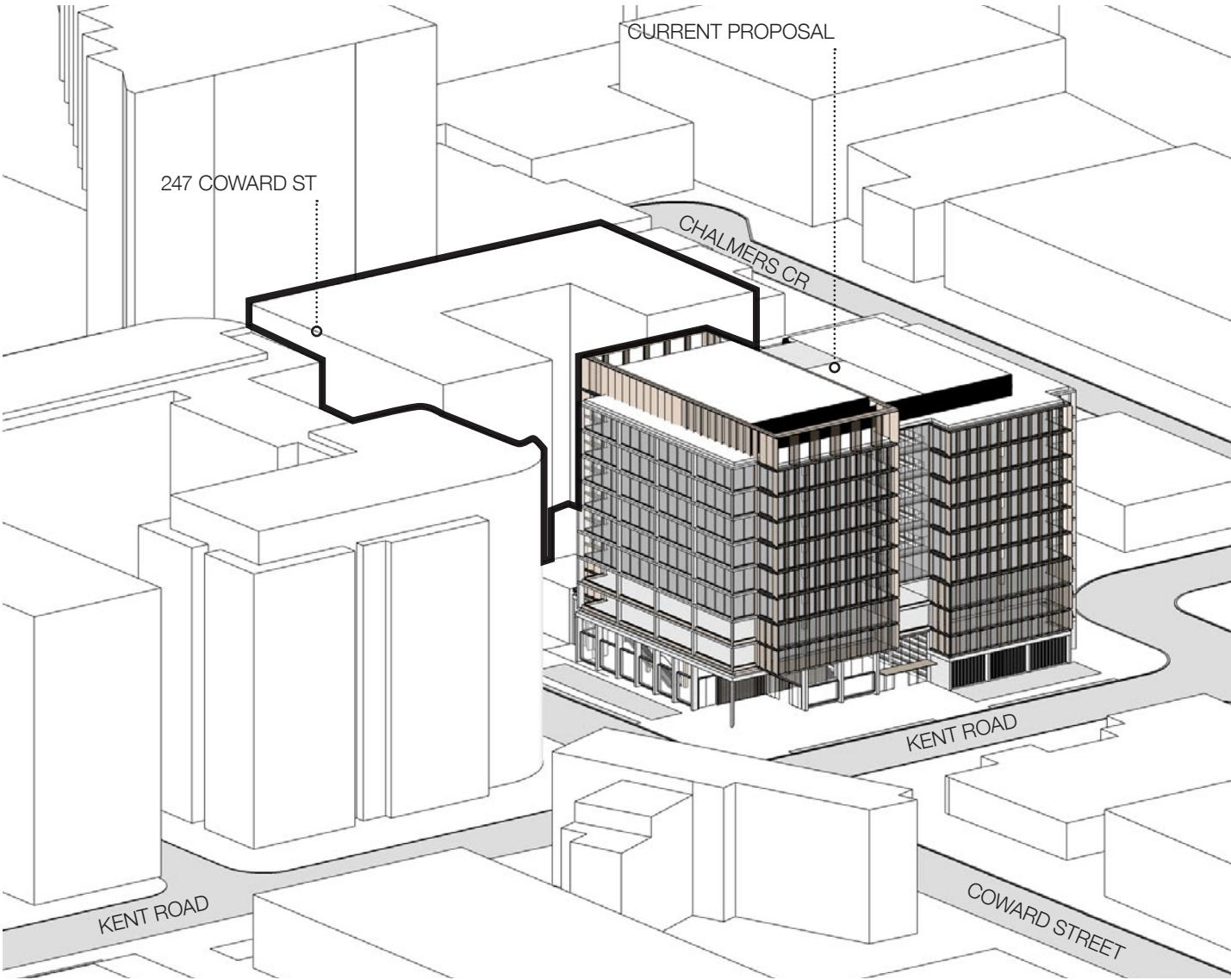
In the absence of accurate survey on the extent of the Child Care Centre, the location and position of the Child Care are approximate only. The shadow studies detailed herein are based on information ascertained from Google Earth and Nearmaps.

SHADOWS STUDIES

VIEWS FROM THE SUN



21 JUNE 3PM / DCP PLANNING ENVELOPE



21 JUNE 3PM / CURRENT PROPOSAL

CHILD CARE TERRACE

NOTE

In the absence of accurate survey on the extent of the Child Care Centre, the location and position of the Child Care are approximate only. The shadow studies detailed herein are based on information ascertained from Google Earth and Nearmaps.

BATESSMART™